



Mi·Casa
PRIMALIVA

Where You Belong



CONNECT TO A
NEW ADDRESS
A NEW
PERSPECTIVE





Mi Casa

PRIMALIVA

Where You Belong

—
ULTRA-LUX
3 & 2 BHK HOMES

Thoughtfully planned to **bring happiness...**

Impeccably **designed to give delight...**

Meticulously crafted to **ensure comfort...**

Welcome to **Mi Casa Primaliva,**

the **iconic new landmark** on **Hadapsar.**

Standing at the crossroads of
style, convenience, space and **sophistication,**

Mi Casa sets the stage for
relaxed, leisurely living.

CONNECT TO EASY LIVING

Break free from the shackles of cluttered
housing and step into a space
sensibly designed with your **comfort in mind.**

Enter a cozy world where everything
you need is just **round the corner.**

Mi Casa

**Finally, a home that is planned around
your family's expectations.**





CONNECT TO A CLOSE-KNIT COMMUNITY

With only ____ units spread across ____ levels,
Mi Casa offers you the ultimate
in privacy and solitude.

Say good bye to **clustered, crammed living**.
Enjoy the company of a community neighbours,
who equally share your penchant for graceful living.







CONNECT TO A VIBRANT LIFESTYLE

Every time you step out of your cozy home,
you will be greeted by exciting lifestyle choices!
Snugly situated to the landmark **Serum Institute**,
the project offers good all-round connectivity.

Indulge in gourmet dining experiences;
chill out at one of the trendy clubs; shop till
you drop at the upmarket malls and
get your dose of entertainment at the multiplex.

And the best part is these destinations
are a quick drive away.

That's not all; you have
easy connectivity to prestigious
academic institutes, Shopping Malls and Hospitals.

LANDMARKS

Global Indian International School

St. Joseph's School

Sadhna Primary School

S M Joshi Vidyalaya

MMCC



EDUCATION

Sahyadri Super Speciality Hospital

Villoo Poonawalla Memorial Hospital

Noble Hospital

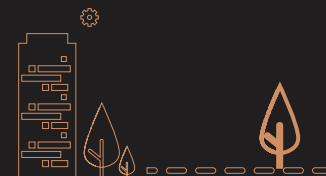
Tupe Hospital & Polyclinic

Annasaheb Magar Hospital

Nande Hospital



HEALTHCARE





Amanora Mall

Seasons Mall

93 AVENUE

Westend Mall



SHOPPING

TERITREE Restaurant

The Fort Bar and Kitchen

Four seasons

24k Restaurant

Tandoori Nights

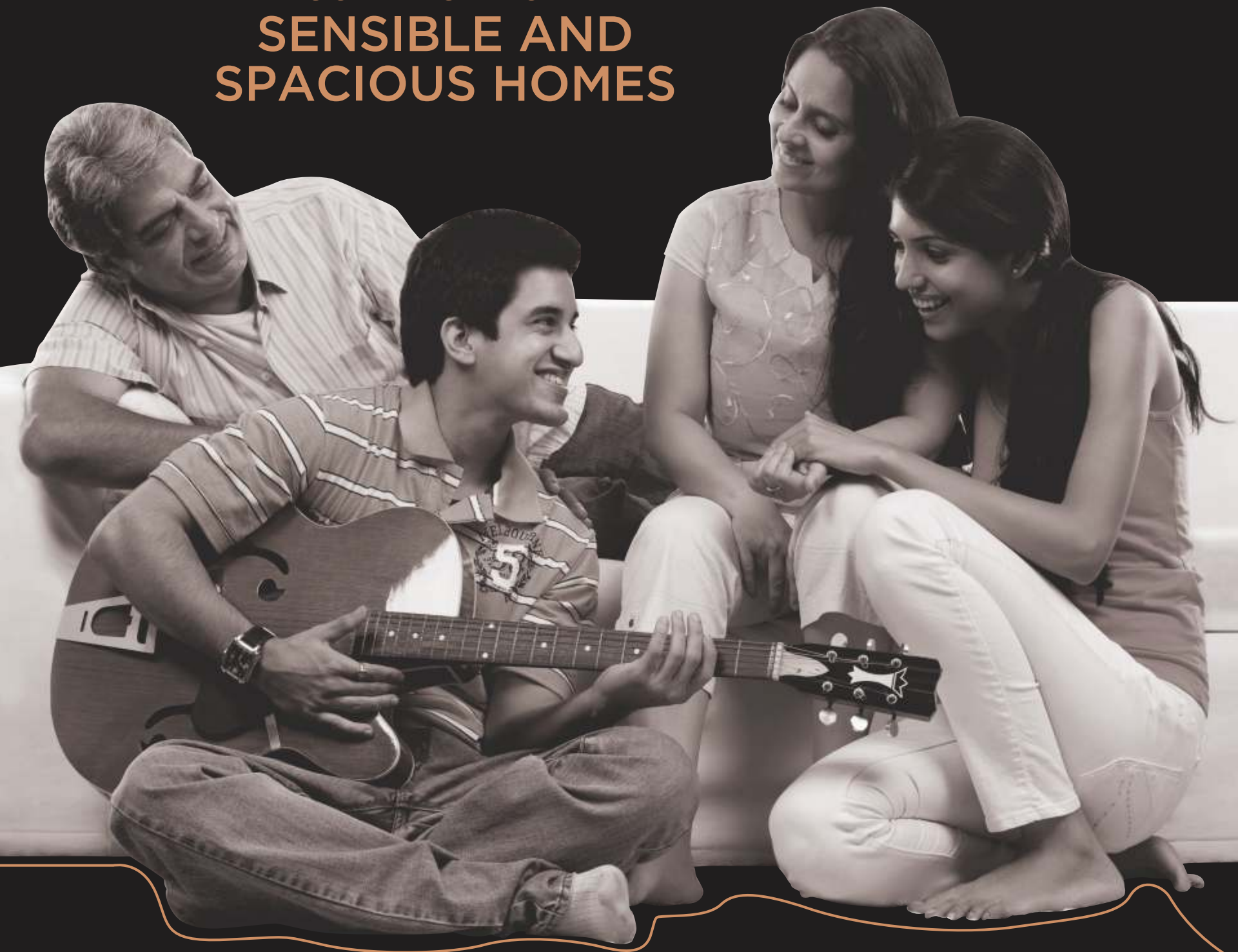


RESTAURANT'S





CONNECT TO A
**SENSIBLE AND
SPACIOUS HOMES**









AMENITIES



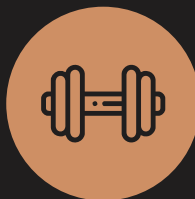
Club house



Yoga/Mediation Room



Swimming Pool



AC Gymnasium



Activity Area



Senior Citizen Sitting Area



Landscape Garden



Amphitheater



Jogging Track



Kids Play Area

SPECIFICATION

STRUCTURE

- > Designed as per earthquake resistant norms and IS code
- > Internal 6" thick wall
- > External wall with sand face plaster

FLOORING

- > Vitrified tiles flooring of 800 x 800 mm for living, dining and kitchen
- > Vitrified tiles flooring of 600 x 600 mm for bedrooms
- > Designer dado up to 7 feet height for all bathrooms and kitchen
- > Designer anti-skid tile for bathroom, balcony and dry balcony

DOORS

- > Flush doors with laminate finish along with elegant mortise lock
- > Artificial granite door frame for toilets with elegant cylindrical lock

WINDOWS

- > Euro sliding windows with mosquito mesh and M.S. safety grill
- > M.S railings for balcony
- > Natural granite sills

KITCHEN

- > L - Shaped kitchen platform with artificial granite top and S.S sink
- > Provision for exhaust fan and water purifier in kitchen
- > Provision of MNGL piped gas supply

ELECTRICAL

- > Concealed copper wiring with branded modular switch boards, distribution board and MCB
- > Provision for inverter and adequate light points in entire apartment
- > Provision for AC and USB port in master bedroom
- > Provision for electrical and plumbing point for washing machine in dry balcony

PLUMBING

- > Concealed plumbing
- > Provision for exhaust fan for toilet window
- > Branded sanitary ware and chrome finished fittings in all bathrooms and kitchen
- > Health faucet in all bathrooms
- > Provision for boiler installation

COMMON AMENITIES

- > Automatic elevators with S.S finish ARD
(Auto Rescue Device)
- > Fire hydrant system
- > Ample two level parking space
- > Entrance gate with security cabin
- > Colour Video door phone
- > CCTV for entrance lobby and common areas
- > Access control for common lobby
- > Generator back up for common areas, water pumps and lifts
- > Name plates for every flat & name board at entrance lobby
- > Rain water harvesting
- > Solar assisted water heating in common bathroom
- > Internal road of trimix and paving blocks

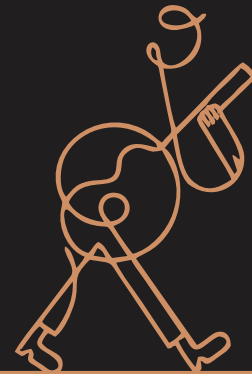




Mi Casa

PRIMALIVA

Where You Belong



SHREE VENKATESH GROUP
Construction & Realty

SITE ADDRESS: 18A, Sr. No. 211/17, 18B, DP Rd, Malwadi, Hadapsar, Pune,

CORPORATE OFFICE: Flat. No. 101, Shree Laxmi Villa, S.No. 1170/32, Revenue Colony, Shivajinagar, Pune 05

PHONE: 020-25532886, 9370086939 **WEBSITE:** www.shreevenkateshgroup.com

This is not an offer, an invitation to offer and/or commitment of any nature. This contains artistic impressions and stock images for illustrative purpose and no warranty is expressly or impliedly given that completed development will comply in any degree with such artist's impression as depicted. All specifications of the flat shall be as per the final agreement between the Parties. Recipients are advised to use their discretion in relying on the information/amenities described/shown therein.